

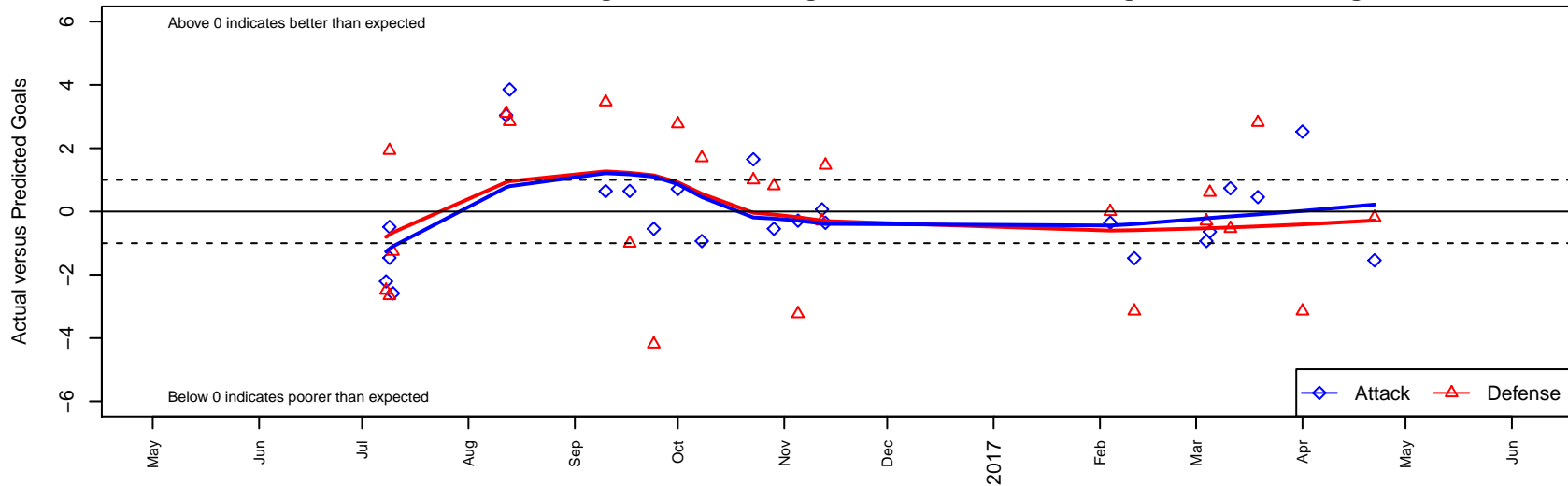
Impact FC Black B06

Cascade SC
 Renton, WA
 B06 total strength=239
 attack=0.23 defense=0.09
 fall league = PSPL Classic 3 U11
 spr league = Spr PSPL Classic 3 U11

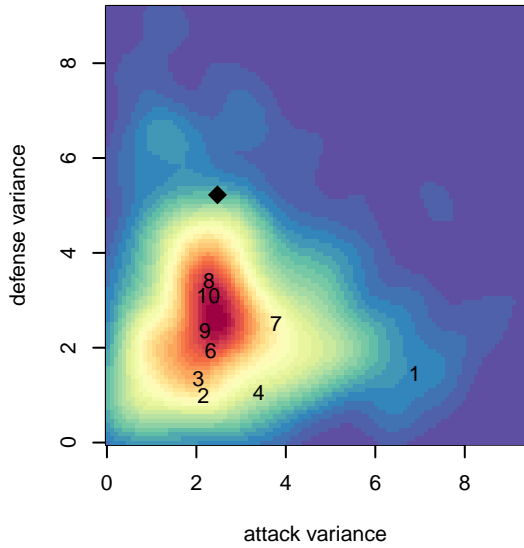
alt names used:
 Impact FC B06-07 Black
 CSC IMPACT FC B06-07
 CSC IMPACT FC B06-07
 CSC Impact FC '06 Black
 CSC Impact FC '06 Black

Venues played:
 2016 KCC BU11 B
 2016 KCC BU11
 2016 Blast Off B2006 B
 2016 PSPL Classic 3 U11
 2016 Spr PSPL Classic 3 U11

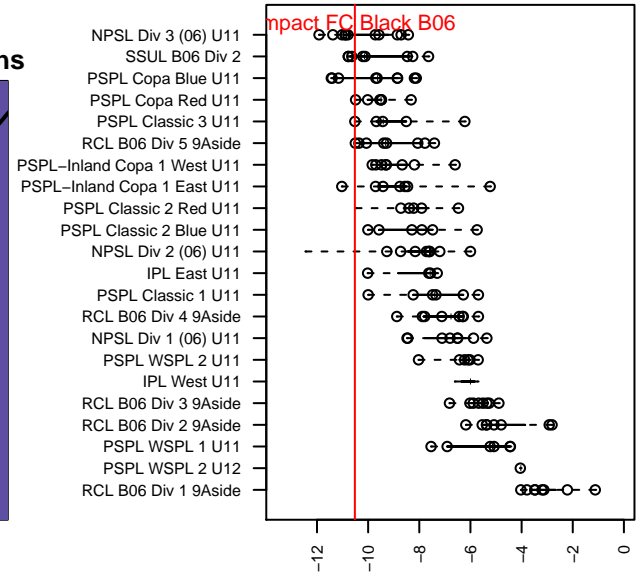
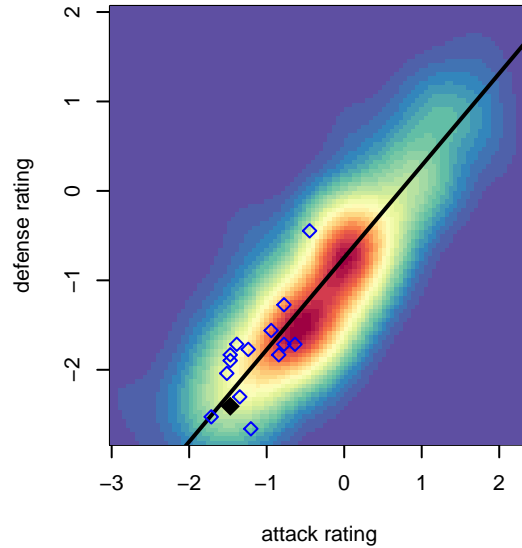
Impact FC Black B06
 Dots are actual minus expected GF (blue circles) and GA (red triangles).
 Blue line is smoothed change in attack strength. Red is smoothed change in defense strength.



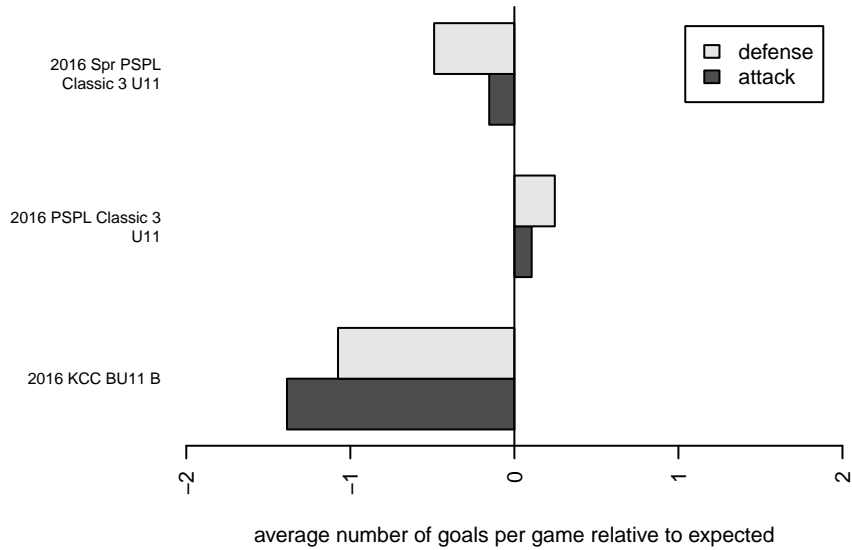
**attack and defense variance (black dot)
relative to other teams
and top 10 in region**



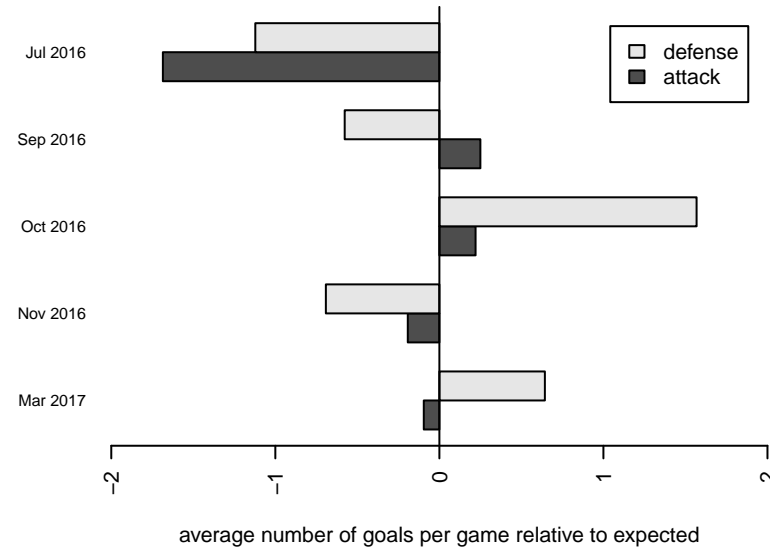
**attack and defense rating
relative to others at age
and all opponents in last 13 months**



Performance relative to 13 month average



Performance relative to 13 month average



| date | home | | away | | venue | pred.home | pred.away |
|-------------|------------------------------------|---|-------------------------|---|-----------------------------|------------------|------------------|
| 2017-04-22 | ISC Gunners C B06 | 3 | Impact FC Black B06 | 0 | 2016 Spr PSPL Classic 3 U11 | 2.81 | 1.54 |
| 2017-04-01 | MRFC Blue B06 | 8 | Impact FC Black B06 | 4 | 2016 Spr PSPL Classic 3 U11 | 4.85 | 1.48 |
| 2017-03-19 | Impact FC Black B06 | 2 | ISC Gunners C B06 | 0 | 2016 Spr PSPL Classic 3 U11 | 1.54 | 2.81 |
| 2017-03-11 | RSA Elite B B06 | 5 | Impact FC Black B06 | 2 | 2016 Spr PSPL Classic 3 U11 | 4.46 | 1.26 |
| 2017-03-05 | Impact FC Black B06 | 1 | MVP Rapids White B06 | 2 | 2016 Spr PSPL Classic 3 U11 | 1.64 | 2.60 |
| 2017-03-04 | Nortac Sparta White B06 | 3 | Impact FC Black B06 | 2 | 2016 Spr PSPL Classic 3 U11 | 2.70 | 2.93 |
| 2017-02-11 | Impact FC Black B06 | 0 | MRFC Blue B06 | 8 | 2016 Spr PSPL Classic 3 U11 | 1.48 | 4.85 |
| 2017-02-04 | Impact FC Black B06 | 1 | TC United White B06 | 3 | 2016 Spr PSPL Classic 3 U11 | 1.35 | 3.00 |
| 2016-11-13 | NC Alliance Rebels B06 | 6 | Impact FC Black B06 | 0 | 2016 PSPL Classic 3 U11 | 7.46 | 0.36 |
| 2016-11-12 | Nortac Sparta White B06 | 3 | Impact FC Black B06 | 3 | 2016 PSPL Classic 3 U11 | 2.70 | 2.93 |
| 2016-11-05 | NPSA Titans Navy B06 | 8 | Impact FC Black B06 | 1 | 2016 PSPL Classic 3 U11 | 4.77 | 1.29 |
| 2016-10-29 | Impact FC Black B06 | 1 | ISC Gunners C B06 | 2 | 2016 PSPL Classic 3 U11 | 1.54 | 2.81 |
| 2016-10-23 | Impact FC Black B06 | 3 | TC United White B06 | 2 | 2016 PSPL Classic 3 U11 | 1.35 | 3.00 |
| 2016-10-08 | Impact FC Black B06 | 2 | Nortac Sparta White B06 | 1 | 2016 PSPL Classic 3 U11 | 2.93 | 2.70 |
| 2016-10-01 | Impact FC Black B06 | 2 | NPSA Titans Navy B06 | 2 | 2016 PSPL Classic 3 U11 | 1.29 | 4.77 |
| 2016-09-24 | ISC Gunners C B06 | 7 | Impact FC Black B06 | 1 | 2016 PSPL Classic 3 U11 | 2.81 | 1.54 |
| 2016-09-17 | TC United White B06 | 4 | Impact FC Black B06 | 2 | 2016 PSPL Classic 3 U11 | 3.00 | 1.35 |
| 2016-09-10 | Impact FC Black B06 | 1 | NC Alliance Rebels B06 | 4 | 2016 PSPL Classic 3 U11 | 0.36 | 7.46 |
| 2016-08-13 | Southlake Select Red B06 | 1 | Impact FC Black B06 | 5 | 2016 Blast Off B2006 B | 3.84 | 1.14 |
| 2016-08-12 | Impact FC Black B06 | 4 | FWFC White B06 | 1 | 2016 Blast Off B2006 B | 0.96 | 4.10 |
| 2016-07-10 | Seattle United Shoreline White B06 | 3 | Impact FC Black B06 | 0 | 2016 KCC BU11 | 1.74 | 2.58 |
| 2016-07-09 | Impact FC Black B06 | 0 | Central WA SA White B06 | 1 | 2016 KCC BU11 B | 1.46 | 2.93 |
| 2016-07-09 | BIFC White B06 | 5 | Impact FC Black B06 | 1 | 2016 KCC BU11 B | 2.34 | 1.49 |
| 2016-07-08 | Impact FC Black B06 | 0 | Kent United White B06 | 5 | 2016 KCC BU11 B | 2.21 | 2.51 |